

WHY STUDY PSYCHOLOGY?

- **Undergraduate Programmes**
- **Taught Postgraduate Programmes**
- **Research Postgraduate Programmes**

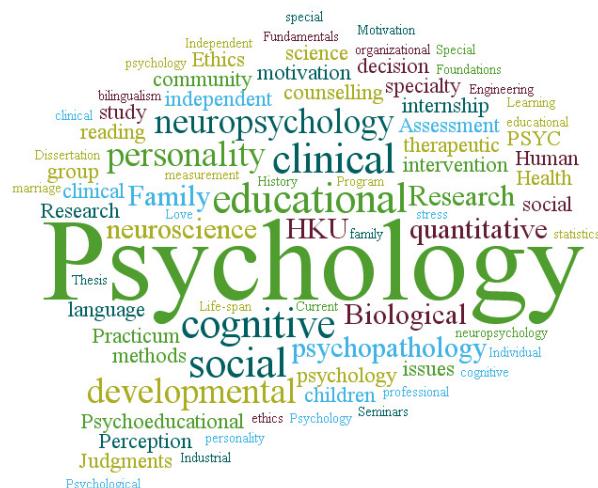




WELCOME TO THE DEPARTMENT OF PSYCHOLOGY, HKU

The field of psychology is dedicated to the scientific study of human behaviour, thoughts, feelings and actions from social, developmental and biological perspectives. Its teaching at the university dates back to before 1950 when it was conducted in a joint Philosophy/Psychology department. In 1968, psychology became a founding department of the Faculty of Social Sciences. Since that time, the Department has contributed to developing the discipline both locally and internationally through dedicated teaching and research work often in collaboration with colleagues from different parts of the world. We have been consistently ranked as one of the best psychology programmes in Asia.

Psychology at HKU is represented by 19 faculty members with different areas of expertise, including clinical psychology and neuropsychology, cognitive psychology and cognitive science, neuroscience, educational and developmental psychology, as well as social and health psychology. In each area, faculty members apply scientific methods in laboratories or field settings. They conduct world-class research in a variety of areas, and the Department is recognized as a leader in research for the region. Students benefit from being taught by leading scholars in their fields, and from having opportunities to be involved with cutting edge research.



Our goal as engaged and dedicated professors is to create and instill knowledge in psychology. We offer a broad range of programmes from undergraduate to graduate level and is committed to designing the most appropriate learning experiences that suit students' needs, sharing with them the exciting developments in psychology, and helping them achieve the required level of academic competence. For more information on the range of programmes that we offer, please visit our department website at www.psychology.hku.hk.

Department of Psychology
The University of Hong Kong



UNDERGRADUATE PROGRAMMES



Programme	1st Major (For BPsych students only)	2nd Major*	Minor*
Psychology	✓	✓	✓
Cognitive Science		✓	✓
Neuroscience		✓	✓
Human Resource Management - FSS			✓

* Students can declare a second major/minor after admitted into the HKU from semester 1 of Year 2.

BACHELOR OF PSYCHOLOGY (BPSYCH) (Programme Code: 6705)



The Department has launched a new Bachelor of Psychology Programme in 2022, which puts great emphasis on enhancing students' understanding of psychological phenomenon and principles through first-hand practical experience, applying knowledge and skills to real-life situations, and research-intensive learning. This programme allows students to follow their interest in Psychology and pursue first degree, which leads to postgraduate pathways such as Clinical Psychology and Educational Psychology, as well as a wide range of careers.

Students will be equipped with basic skills across all areas of Psychology, including the biological and cognitive bases of behaviour, developmental changes, social influence, and contemporary issues. They will also be provided with opportunities for tackling novel problems as well as experience of addressing issues that are ill-defined. Through the comprehensive training in the Programme, students' skills in critical analysis, reasoning and self-reflection can be developed.

The Programme provides an internationally-recognised qualification in fundamental aspects of Psychology that allows students to pursue both professional training in applied aspects of Psychology (e.g., Educational or Clinical Psychology), and advanced research training in all related research areas of Psychology, including Cognitive Science and Neuroscience.

Apart from the Psychology major, students are given flexibility to explore their academic interests in a wide variety of disciplines across all faculties in the University. For example, students may opt to declare a second major in Social Sciences disciplines, such as Cognitive Science, Counselling, Criminology, Neuroscience, etc., if they are considering further study or work in the professions related to psychology and mental health.

Admission website: <https://psychology.hku.hk/admission-undergraduate/>





| MAJOR/MINOR IN COGNITIVE SCIENCE

Cognitive Science is the scientific study of the mind and mental phenomena. For example, how do we process information and solve problems? What is mental imagery? What is consciousness? Could a computer really think? Do other animals have language? Answering these questions relies upon an interdisciplinary perspective, and so Cognitive Science adopts methodologies from artificial intelligence, psychology, philosophy, linguistics, neuroscience, and education. Students who take this programme will be exposed to research in all these disciplines, and will integrate results from across the different approaches in order to more fully understand the complexities of the mind and the brain.



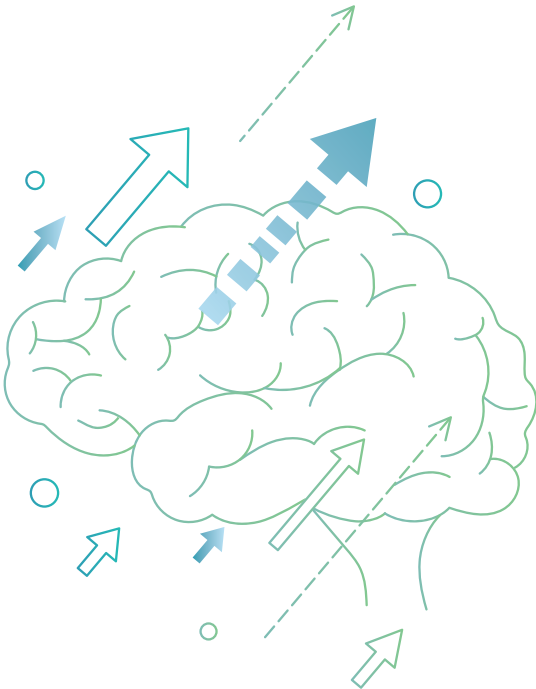
We are the first and the only Psychology department that offers multidisciplinary programme in Cognitive Science in Hong Kong. A core aspect of the programme is to ensure that students learn skills from different research traditions; for example, a Cognitive Science student could be expected to learn how to run psychological experiments, apply formal linguistic analysis, or critique a philosophical argument. In doing so, this program will develop students who have a variety of formal intellectual skills, and can bring these skills to bear on a range of issues in our increasingly technological world. Students with a Major in Cognitive Science will also be able to act as a bridge between those who are technically skilled and those who seek to understand technology, by placing formal computational analysis within the context of human thought and behaviour.

Programme webpage: https://psychology.hku.hk/content/programmes/UG/PI_CognitiveScience.pdf



| MAJOR/MINOR IN NEUROSCIENCE

Neuroscience is the interdisciplinary study of the structure and function of the nervous system. We are the first and the only Psychology department in Hong Kong that offers multidisciplinary programmes in Neuroscience since 2017. This programme focuses on the neural mechanisms underlying behavior, cognition and perception in humans, both in health and disease (although students will be exposed to findings from animal studies as well). Students will be given rigorous academic training, from a variety of disciplines, to prepare them for further studies and research, as well as to be able to eventually translate the relevant knowledge into practical applications. Apart from academic careers and further medical training in areas such as cognitive neuroscience, psychology, neurology, and psychiatry, other career paths include computer science, education, artificial intelligence, public policy, marketing, medicine, and pharmacology etc., as they all benefit from a basic training in neuroscience.



Programme webpage: https://psychology.hku.hk/content/programmes/UG/PI_Neuroscience.pdf

| MINOR IN HUMAN RESOURCE MANAGEMENT-FSS

To be able to manage a culturally and psychologically diverse workforce, one must not only possess the requisite management skills but also be culturally sensitive. To prepare students for this, our interdisciplinary minor in Human Resource Management include courses that contain elements on wellness, global citizenship, and cultural sensitivity of which are offered by the Department of management, economics, politics and public administration, psychology and social work.

Programme webpage:

https://psychology.hku.hk/content/programmes/UG/PI_HRM-FSS.pdf



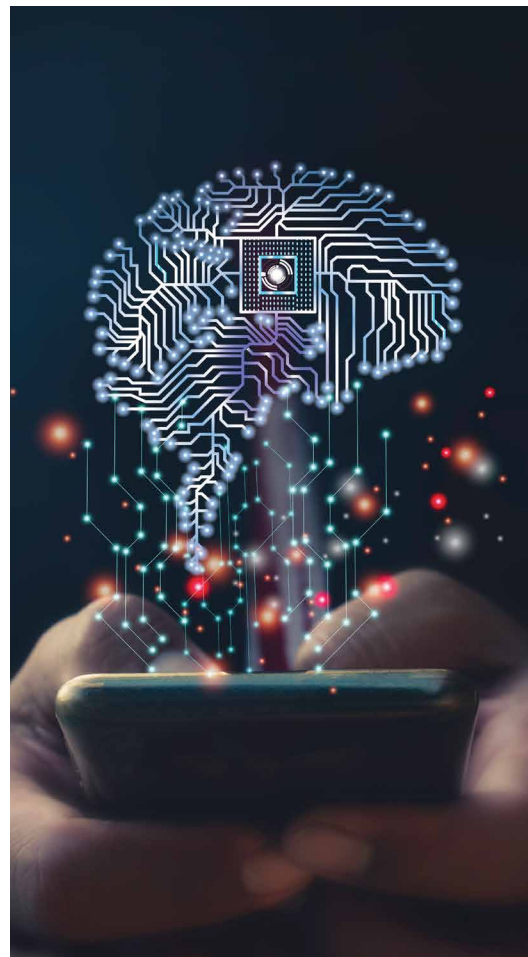


MASTER OF SOCIAL SCIENCES (MSOCSC) IN THE FIELD OF PSYCHOLOGY

Building on the success of launching the highly sought-after Postgraduate Certificate in Psychology programme since 1978, in 2015, we upgraded the Postgraduate programme to become the Master of Social Sciences in the field of Psychology programme. The programme normatively be one academic year for full-time study and two academic years for part-time study. The mission of this programme is to provide high quality postgraduate education in psychology. The programme incorporates intensive research training, adopts a fit-for-purpose problem-based learning approach, and makes a capstone experience for every student in this programme so as to better equip our graduates for further studies or future career in psychology.

In 2021, we further revamped the programme that for holders of a recognized degree in a subject other than psychology, the programme provides them the training to acquire solid foundation in psychology with a strong understanding of psychology theories and research methods. Via the development of new electives with deeper knowledge and diverse contexts, students with psychology background are provided with opportunities to further advance their knowledge in the discipline of psychology.

Admission website: <https://psychology.hku.hk/admission-master-of-social-sciences-in-the-field-of-psychology/>



TAUGHT POSTGRADUATE PROGRAMMES



MASTER OF SOCIAL SCIENCES (MSOCSC) IN THE FIELD OF CLINICAL PSYCHOLOGY

DOCTOR OF PSYCHOLOGY (PSYD) IN THE FIELD OF CLINICAL PSYCHOLOGY



Master of Social Sciences (MSocSc) in the field of Clinical Psychology Programme is the building block of the clinical psychology training. It aims to train competent and professional clinical psychologists and has an emphasis on science-based practices. The curriculum extends over two years full-time including the intervening vacations between the semesters. Whereas the first year of the curriculum focuses on the theoretical foundations and basic skills training in clinical psychology, the second year includes specialized training in assessment skills, and the application of psychological theories and models to evidence-based clinical practice in a wide range of settings. The programme transitioned from alternate year intake to annual intake in 2019.

Since its inception in 1971, the Programme has produced over 300 qualified clinical psychologists in Hong Kong. Graduates are eligible to become registered clinical psychologists of the Hong Kong Psychological Society (HKPS). Graduates are represented in different professional settings, including the Hospital Authority, Social Welfare Department, Department of Health, Correctional Services Department, Hong Kong Police Force, Non-Government Organizations, Student Counseling Centres and private practice.

Admission website: <https://psychology.hku.hk/admission-master-of-social-sciences-in-the-field-of-clinical-psychology/>

Our **Doctor of Psychology (PsyD) in the field of Clinical Psychology**, established in 2004, is a first-of-its-kind programme offered in Hong Kong. Its primary aim is to provide advanced training for experienced CPs who hold a recognized MSocSc degree in Clinical Psychology or equivalent to become professional leaders in the field. Emphasis is placed on a scientist-practitioner model of education. The Programme is designed to help candidates develop skills and knowledge with the view to enhancing clinical and research development in the profession, and to equip the candidates in becoming specialists in the field.

The curriculum extends over a minimum of twenty-four months (full-time) or thirty-six months (part-time). Candidates are required to complete the coursework satisfactorily and a thesis. The courses cover theoretical and applied aspects of clinical psychology.

Admission website: <https://psychology.hku.hk/admission-doctor-of-psychology-in-the-field-of-clinical-psychology/>

PATHWAY

Doctor of Psychology (Clinical Psychology) Programme

(2-year full-time or 3-year part-time)



Master of Social Sciences in Clinical Psychology Programme

(2-year full-time)



Undergraduate Studies in Psychology or equivalent



MASTER OF SOCIAL SCIENCES (MSOCSC) IN THE FIELD OF EDUCATIONAL PSYCHOLOGY

DOCTOR OF PSYCHOLOGY (PSYD) IN THE FIELD OF EDUCATIONAL PSYCHOLOGY

Master of Social Sciences (MSocSc) in the field of Educational Psychology is the first postgraduate programme in Hong Kong that is designed to train professional educational psychologists in serving local communities. It is also the first and only programme in Asia accredited by the International School Psychology Association (ISPA). The programme admits a cohort of students every other year. The period of study extends over two years full time, commencing in September and including the intervening vacations. Throughout the programme, in both its theoretical and practical aspects, special attention is paid to the needs and issues concerning educational psychology in the local setting.



Since its inception in 1981, the programme has over 200 graduates. Most graduates are employed as Educational Psychologists by the Education Bureau of the Hong Kong government and voluntary agencies running special and mainstream schools. Graduates from this Programme can also choose to pursue further study in higher degree programmes.

Admission website: <https://psychology.hku.hk/admission-master-of-social-sciences-in-the-field-of-educational-psychology/>

Doctor of Psychology (PsyD) in the field of Educational Psychology, established in 2008, is the only-of-its-kind programme offered in Hong Kong. Its primary aim is to provide further and specialized training for experienced educational psychologists who hold a recognized MSocSc degree in Educational Psychology or equivalent to develop specialties in educational research and practices. The Programme emphasizes a scientist-practitioner model of education. In consequence, holders of this degree shall be equipped to function competently as professional educational psychologists in the areas of research, tertiary-level teaching, and professional services. The curriculum normally extends over a minimum of twenty-four months of full-time study or thirty-six months of part-time study. The courses cover theoretical and applied aspects of educational psychology.

Admission website: <https://psychology.hku.hk/admission-doctor-of-psychology-in-the-field-of-educational-psychology/>

RESEARCH POSTGRADUATE PROGRAMMES



| MASTER OF PHILOSOPHY (MPHIL) & DOCTOR OF PHILOSOPHY (PHD)



Our research postgraduate curriculum is specifically designed to assist students with the publication process through acquiring various relevant skills: training in basic and advanced statistics to develop and deepen their data-analytical skills, training in writing communications to polish their skills in manuscript writing and publication, and seminars to sharpen their skills of reasoning, inquiry, and critical analysis.

In addition to the traditional one-to-one mode of supervision, the incorporation of coursework into the 2-year MPhil/4-year PhD programmes serves to provide a form of structural supervision. The coursework component includes courses required by the Graduate School and the Department. Major research areas in the Department of Psychology include Clinical Psychology and Neuropsychology, Cognitive Psychology and Cognitive Science, Neuroscience, Educational and Developmental Psychology, and Social and Health psychology.

Admission website: <https://psychology.hku.hk/admission-master-of-philosophy-doctor-of-philosophy/>

| PHD IN THE FIELD OF CLINICAL PSYCHOLOGICAL SCIENCES

PhD in the field of Clinical Psychological Sciences is for students seeking excellence in academic, scientific and clinical training. It aims to train outstanding students and prepare them for increasingly complicated, demanding and independent roles as clinical scientists. The ultimate goal of this programme is to produce future faculty, scientist-practitioners, and leaders in clinical sciences, well prepared for research, university-level teaching, and clinical service delivery. Candidates in this programme will engage with faculty in research activities in field of clinical psychological sciences and are expected to develop an independent line of research under individualized supervision. In addition to the one-to-one mode of supervision, candidates will be required to complete the general coursework components of the PhD programme as required by the Graduate school and the Department.

Admission website: <https://psychology.hku.hk/admission-phd-in-the-field-of-clinical-psychological-sciences/>

| PHD WITH A SPECIALIZATION IN EDUCATIONAL PSYCHOLOGY

PhD with a Specialization in Educational Psychology, started in 2007, is designed to train educational psychologists who are interested in academic career. The graduates from this programme are expected to be scientist-practitioners who are not only strong in research and practice but also well-prepared for university-level teaching.

The curriculum extends over a minimum of 4 years full-time, including two years of coursework & educational practicum. The courses cover the theoretical and applied aspects of educational psychology. Candidates also complete a doctoral level research dissertation presenting original scientific work in a chosen area of educational psychology.

Admission website: <https://psychology.hku.hk/admission-phd-with-a-specialization-in-educational-psychology/>

CONTACT US



Phone number
(852) 3917-7122



General email
dpsychol@hku.hk



Website
www.psychology.hku.hk

